

# St Helen's Magazine

March 2023

50p



St Helen's Church

Ashby-de-la-Zouch



Loving God, loving others, loving the world

# Parish Directory

(The dialling code for these numbers is 01530 except where stated)

ASHBY YOUTH FOR CHRIST	AYFC Office	560940
BANKING & CASH	Andy Smith	
BELL RINGERS	Michael Davidson	DAVIDSON29029@aol.com
BUILDINGS' TEAM		sthelensbuildings@gmail.com
CHURCHWARDEN	Judith Lewis	564204
HERITAGE CENTRE LETTINGS	Elaine Shaw	07392 409745
		sthelenslettings@gmail.com
DIRECTOR OF MUSIC	Andrew Chapman	07792 461782
ELECTORAL ROLL	Eileen Coombs	417883
FLOWER ROTA	Eileen Coombs	417883
GIVING OFFICER	Cornelia Wright	
HERITAGE	Julie Starkey	sthelensheritage@gmail.com
LANTERNS children's group		
MAGAZINE ADVERTISING	Sue Evans	461808
MAGAZINE EDITOR	Jill Chapman	07725 519453
		jill.chapman12@btopenworld.com
MAGAZINE DISTRIBUTION	Margaret Worrall	413665
MOTHERS' UNION	Margaret Worrall	413665
PARISH ADMINISTRATOR	Carole Nettles	411607
PRG young people's group	Elizabeth Smith	07941 935887
READERS	Sue Brown	417313
	Carol Eyley	412334
	Judith Lewis	564204
	Andy Smith	07896 519807
	Elizabeth Smith	07941 935887
SAFEGUARDING	Elizabeth Smith	07941 935887
SERVERS	Eileen Barradel	838029
SOUND SYSTEM	Simon Starkey	415718
STREET PASTORS CONTACT	Chris Lewis	07828 463368

## St Helen's Church contact details:

Parish office: ♦sthelensashby@gmail.com

♦01530 411607

♦Community Heritage Building, 4 Church Yard, South St, LE65 1AA

♦Opening times Monday, Tuesday, Thursday 10.00am - 1.00pm

♦ Facebook: St Helen's Ashby de la Zouch

♦ Instagram:

♦ Twitter: @sthelensashby

♦ Website: www.sthelensashby.net

## Giving

You can make donations to the work of St Helen's via our website - <https://www.sthelensashby.net/Groups/327469/Giving.aspx>

## Editor Writes ...

My magazine editing days are drawing to a close, and I do hope volunteers can be found to edit the magazine and to print it, both roles being up for grabs when I finish. Of course, if we continue to see the steady decline in the number of printed magazines required, I imagine we may need to consider an on-line only version at some point in the future.



I became the parish magazine editor in November 2011. Although it was the first time the magazine had been produced with a colour front cover, I didn't see innovation as my role, rather it was to continue with the very successful and well-produced magazine already created by my predecessors - Anne Heaton, Julie Starkey and Trevor Jordan (and those unknown to me whose task it was before our family arrived at St Helen's in the summer of 1994.)

When I first did the job I had lots of content sent to me each month, including pieces from Ashby churches, Ashby Youth For Christ, Is Mission on Your Map?, Thought For The Month, and Mandy McIntosh's prayerful insights into all things 'fair trade'. Revd Brian Robertson was incumbent then, and was very thorough, sending me information on the month ahead's services as well as a comprehensive list of all the upcoming activities for the diary, plus the baptisms, weddings and funerals for the previous month, in addition to his 'letter' and often another article too.

Two items I have added to the magazine which continue each month are the What's On Notice Board and the Quotes For The Month. For many years most month's we would have a Dave Walker cartoon, for which I paid a subscription. Malcolm Guite's poems also appear frequently, not only because they are excellent, but because we have his permission to use them. My favourite of the several 'occasional strands' we have enjoyed over the years is undoubtedly Home Thoughts From Abroad, when I contacted former members of the congregation or choir (and even several former curates) who had left Ashby, so we could hear their reflections when looking back on their time at St Helen's and tell us a little of what they were up to now. Some of these reflections were literally from abroad, all were a good read, and, as several years have passed, this might be an idea ready to be revisited.

Contributions this month are our regular look at Ashby history from Wendy Freer on page 16, our new regular month by month gardening advice from Alan Cross on page 20, and our MU round up from Adrienne Sedgman on page 19. And over the page, Judith is feeling grateful.

*Jill Chapman*



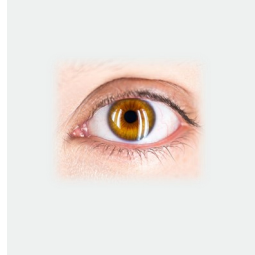
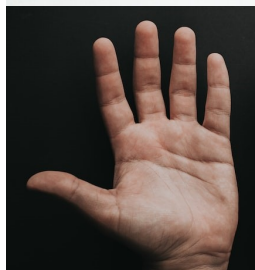
## Judith Lewis Writes ...

Dear Friends,

This month's letter is primarily to say thank you. Thank you to all you many, many people who contribute in so many ways to the life of St Helen's. At our February PCC meeting, we spent some

time considering all the things that go on in the life of our church, and how many people give their time, energy and skill to make them happen. It reminded me of the beginning of the first lockdown, when we were still getting used to the strangeness of "doing church" on line, and we had a sermon series on "what is church?" One of those sermons picked up on Paul's first letter to the Corinthians, where, in chapter 10 he compares the church to a body. One organism, many parts making up the whole, each with their different and specialist functions, all dependent on each other to keep the whole body working healthily and effectively. Paul speaks of the obvious and apparently prestigious roles that some parts of the body play, but he also speaks of the less obvious members, the ones that it is easier to overlook – and he is absolutely unequivocal when he says that these less glamorous roles are just as necessary a part of the whole body as the ones that stand out.

Since I've been a Church Warden, I've become increasingly aware of just how much goes on behind the scenes at St Helen's. I'm thinking of all of you who turn up on a regular basis to clean our church building, care for our grounds, fix the seemingly endless series of miscellaneous practical problems that crop up, deal with the unpredictability of the boiler, unlock the church at the beginning of each day and lock it up again at the end. I'm thinking of the people who enhance our worship – operating the sound system, welcoming us as we arrive, acting as servers during our services of Communion, changing the altar frontals with the seasons, contributing and arranging flowers, counting and banking the collections, serving coffee after the service. And I'm thinking of those who make time to look out for, to care for and listen to others at the times they need it, and all



those involved in different ways with ministries to children and families. Perhaps especially those unsung heroes who faithfully pray for our church family. [This is by no means an exhaustive list – it's barely the tip of the iceberg.] It's easy to notice our choir and musicians, those who lead worship and preach, those who read lessons and lead intercessions, all of whom are such a blessing to us and for all of whom I am deeply appreciative and grateful. But none of that could happen in the same way without all that goes on quietly behind the scenes, and I want to take this opportunity to say how grateful I am to you all.

We have been in Vacancy now for just over a year, and perhaps one of the things we have learned through that is how much we need each other, and how much of a blessing we can be to one another. "The Message" translation of 1 Corinthians puts it like this: "Each person is given something to do that shows who God is. Everyone gets in on it, everyone benefits. All kind of things are handed out by the Spirit and to all kinds of people. The variety is wonderful.... God has carefully placed each part of the body right where he wanted it."

One of the things that came out of our discussion in PCC was the importance of recognising and appreciating all the different contributions to the life of our church. So each week we will be including one or more of these ministries in the section of our notice sheet under the heading of "Prayer" and giving thanks and praying for you in our intercessions. And, on a regular basis, in our services we will be asking representatives from different areas of our church life to tell us about their ministry and recognising and commissioning you in those ministries. Ministries is the right word – these are all areas of service which we offer to God.

I couldn't, of course, finish this letter without saying that if you feel called to explore getting involved with any of these areas of the life of our church, please do talk to me or someone already involved!

But what I really want to say today is "thank you". And perhaps, most of all, to all of you have exercised one particular area of ministry over the past year – the ministry of encouragement. Thank you so much to all of you who have been and continue to be such an encouragement to me and to others over the past year.

**Judith**

## **Haggis Supper**

**W**ell done to Elizabeth Smith and her helpers for the wonderfully enjoyable Haggis Supper. The evening was a great success, with lovely food, stirring music, and the sum of £603.25 raised for church funds.





**JP SPRINGTHORPE & C<sup>o</sup>**

## Funeral Directors

**Castle Lodge  
South Street  
Ashby de la Zouch  
Leicestershire  
LE65 1BR**

As the only privately owned, family run, Funeral Directors in Ashby de la Zouch, we are able to offer an extremely personal, yet professional service, and at a reasonable cost, both in Leicestershire and Derbyshire

**Under the personal supervision of John Springthorpe**

*Quotations given*

**Telephone: 01530 417310 anytime**

# From the Albums

A lot of our eco focus here at St Helen's at the moment is on recycling, reusing, repairing and repurposing fabrics. This was reflected in our half-term children's activity, where Anna helped KS1 and KS2 children to create some 'Very Hungry Caterpillars' and to achieve a Discover Arts Award.



There is a Hungry Caterpillar display in church, and our latest exhibition in the Heritage Centre continues the re-using fabric theme with a vintage sewing exhibition, ready for our Sew It Don't Throw It launch.



**The  
What's  
On  
Notice board**

St Helen's Heritage Centre  
Ashby de la Zouch



Come along to our exciting

# OPEN DAY

to launch our **repair, re-cycle & repurpose**  
textiles project

- demonstrations
- meet the makers
- 'have a go' repair and make
- clothes swap rail
- vintage sewing exhibition
- and lots of chat about all things textile!

Sew  
don't  
it  
throw  
it

Saturday  
11<sup>th</sup> March  
10.30am  
- 3.30pm

4 Church Yard, Ashby-de-la-Zouch, Leics, LE65 1AA

[Facebook.com/sthelensheritage](https://www.facebook.com/sthelensheritage)

[instagram.com/sthelensheritage](https://www.instagram.com/sthelensheritage)

[www.sthelensashby.net](http://www.sthelensashby.net)



Supported by  
Leicestershire  
County Council





## St Helen's Heritage Centre

4 Church Yard, Ashby-de-la-Zouch, Leics, LE65 1AA

# Clothes

As part of our  
'Sew It Don't Throw It'  
project we will be  
holding a Clothes Swap  
at the launch day ...

Bring some,  
Swap some -  
Such Fun!

# Swap!



Saturday  
11<sup>th</sup> March  
10.30am to  
3.30pm

(Clean  
clothes  
only  
please!)

Facebook.com/sthelensheritage  
instagram.com/sthelensheritage  
www.sthelensashby.net



Supported by  
Leicestershire  
County Council

# *An Enlightened Heart*



## Performed by **Galliarda**

Sara Stowe (harpsichord and voice); Kate Allsop (voice flute); Ibi Azziz (viol); Matthew Spring (lutes and guitars)

St Helen's Church, Lower Church Street, Ashby-de-la-Zouch, LE65 1AA  
Saturday 4 March 2023 7.30pm



Galliarda's 'An Enlightened Heart' project highlights the music and performing traditions of women in the eighteenth-century. Plus two new pieces for early instruments commissioned by Galliarda from female composers.

Tickets: £10

Go to: [www.sthelensashby.net](http://www.sthelensashby.net)  
and click on 'What's coming up' or scan this QR code.



 CONTINUO  
FOUNDATION



# MOSAIC

## GOOD NEWS

ST HELEN'S CHURCH, ASHBY DE LA ZOUCH

FRIDAY 10<sup>TH</sup> MARCH, 2023, 7.30 pm

MOSAIC return to Ashby de la Zouch with an exciting programme of a cappella vocal music, from Thomas Tallis to the Beatles

No ticket required. Retiring collection.  
More information about the group can be found at:  
<https://mosaicoctet.wordpress.com>

*"The group is impressive equally for its blend, its unanimity - it was a joy to watch the continual interaction that made each item a piece of real vocal chamber music"*



**St Helen's Community Heritage Centre**  
4 Church Yard, Ashby-de-la-Zouch, Leics, LE65 1AA

## HERITAGE TALKS 2022 –23

Prof. Peter Ackers

Tuesday 28<sup>th</sup> March at 7.30pm

# Religious Nonconformity & the early Leicester Labour Movement

Peter Ackers is based at Loughborough University where he is Emeritus Professor in the History of Industrial Relations.

Leicester was a major stronghold of the Churches of Christ, and this talk will explore their influence in the Boot & Shoe Worker Co-operative Movement, and in the Great War conscientious objection movement.

£3 including light refreshments  
Tickets on the door



Facebook: St Helen's Ashby de la Zouch  
Website: [www.sthelensashby.net](http://www.sthelensashby.net)  
Email: [sthelensashby@gmail.com](mailto:sthelensashby@gmail.com)



LOTTERY FUNDED

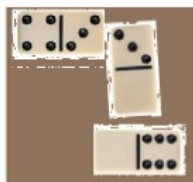




## St Helen's Church & Community Heritage Centre

Starting  
14<sup>th</sup> April  
2023

# WARM SPACE



All  
Welcome

Every  
Friday,  
1pm  
to  
4pm

Tea  
Cake  
Chat  
Cards  
Games



Includes a  
'children's  
corner'



Ashby-de-la-Zouch, Leics, LE65 1AB



[facebook.com/sthelensheritage](https://facebook.com/sthelensheritage)



[instagram.com/sthelensheritage](https://instagram.com/sthelensheritage)



[www.sthelensashby.net](http://www.sthelensashby.net)



Heritage  
Lottery Fund

# Our Worship in March

Week	8.30am	10.30am	pm
<b>1</b> 5 <sup>th</sup> Mar	<b>St Helen's</b> Holy Communion		<b>3.30pm</b> <b>St Helen's</b> All-Age Worship <b>6.00pm</b> <b>St Helen's</b> Evensong
<b>2</b> 12 <sup>th</sup> Mar		<b>St Helen's</b> Holy Communion	<b>12.30pm</b> <b>St Helen's</b> Baptisms
<b>3</b> 19 <sup>th</sup> Mar		<b>St Helen's</b> <b>Mothering</b> <b>Sunday</b> Word & Worship	
<b>4</b> 26 <sup>th</sup> Mar		<b>St Helen's</b> Holy Communion	

## Our usual pattern for services:

- **Sundays**
  - First Sunday of the month -  
8.30am Holy Communion  
3.30pm All-Age  
6pm Choral Evensong
  - Second AND Fourth Sundays of the month -  
10.30am Holy Communion
  - Third Sunday of the month -  
10.30am Service of the Word
  - Fourth Sunday of the month  
3.30pm - 5pm Messy Church (alternation between Viscount  
Beaumont School and St Helen's Heritage Centre.)
- **Wednesdays - Holy Communion - 10.30am**
  - First Wednesday of the month - Holy Communion - in church
  - Second Wednesday of the month - Holy Communion -  
at Prior Park Community Centre
  - Third Wednesday of the month - Service of the Word - in church
- **Saturdays - Parish Prayers - 9.30am in church (Hastings chapel)**

## Regular activities:

Monday mornings, term time  
Mondays

First Tuesday of the month

Third Tuesday of the month

Third Tuesday of the month

Fourth Tuesday of the month

First Wednesday of the month

Thursdays

– Little Fishes 9.30 - 11.30am

– Monday Group - 8pm

– MU meeting 7.30pm - 9pm

– MU meeting 10.30am - 12 noon

– PCC meeting 7 - 9.30pm

– Heritage lectures 7pm - 9.30pm

– 'We're In Stitches' Knit & natter 2 - 4pm

– Choir practice 6.30-8.30

## March Diary

<b>Wednesday 1<sup>st</sup></b>	<b>2 - 4pm</b>	<b>We're in Stitches knit &amp; natter group</b>
<b>Saturday 4<sup>th</sup></b>	<b>7.30pm</b>	<b>Galliarda concert</b>
<b>Tuesday 7<sup>th</sup></b>	<b>7.30pm</b>	<b>Mothers Union meeting (87 Leicester Rd)</b>
<b>Tuesday 7<sup>th</sup> 14<sup>th</sup> 21<sup>st</sup> 28<sup>th</sup></b>	<b>2pm</b>	<b>Team Talk</b>
<b>Tuesday 7<sup>th</sup> 14<sup>th</sup> 21<sup>st</sup> 28<sup>th</sup></b>	<b>7.30pm</b>	<b>Team Talk</b>
<b>Friday 10<sup>th</sup></b>	<b>7.30pm</b>	<b>Mosaic concert</b>
<b>Saturday 11<sup>th</sup></b>	<b>10.30-3.30</b>	<b>Launch of Sew It Don't Throw It project</b>
<b>Tuesday 14<sup>th</sup></b>	<b>9am-3pm</b>	<b>Willesley School visit</b>
<b>Thursday 16<sup>th</sup> &amp; 23rd</b>	<b>5pm</b>	<b>PRG</b>
<b>Tuesday 21<sup>st</sup></b>	<b>10.30am</b>	<b>Mothers Union meeting</b>
<b>Wednesday 22<sup>nd</sup></b>	<b>7.30pm</b>	<b>PCC</b>
<b>Saturday 25<sup>th</sup></b>	<b>10.30-3.30</b>	<b>Sew It Don't Throw It Session 1 - Intro to sewing machine</b>
<b>Tuesday 28<sup>th</sup></b>	<b>7.30pm</b>	<b>Heritage Talk</b>

## Team Talk

Our 'Team Talk' Lent will be exploring issues relating to climate change and our relationship to our faith and responsibilities as Christians, with groups meeting on both Tuesday afternoons and evenings in Lent, commencing on 28<sup>th</sup> February. The afternoon groups will meet at the home of Jenny Hedges, 26 Uppingham Drive for the first 4 weeks and, provisionally, in St Helen's Heritage Centre for the final week. The evening groups will start at 7:30pm and will, as usual, rotate around the churches, starting with meeting at St Matthew's Worthington on 28<sup>th</sup> February and then in St Helen's Heritage Centre on 7<sup>th</sup> March.

## Compline on Wednesdays

There will be a service of Compline at 9pm every Wednesday in Lent, led by Beth Lunt, Associate Minister [Trainee] at Holy Trinity. This will be held on Zoom, with the room opening at around 8:50. The service will last about 20 minutes. Please contact the Holy Trinity office [Office@trinityashby.net](mailto:Office@trinityashby.net) for details of the zoom link.

# Ashby Police Station and Police Court

**W**hen Ashby Police Station in South Street was closed and put up for sale in 2011, it brought to an end 149 years of service to the cause of law and order for this building. It was built in 1862 at a cost of £2,000 and extended in 1879 to provide living accommodation for a police superintendent and a sergeant. It contained police cells, which presumably replaced the lockup on The Green, and also a Police Court.

Although a magistrates' room wasn't added until 1879, the Police Court sat right from the beginning in 1862. This would have been the equivalent of a magistrate's court today, dealing with petty offences and handing out sentences, while more serious crimes would be bound over to appear at the Assizes or the Quarter Sessions in Leicester. Both of these two courts were replaced in 1971 by the County Court.

In the 19<sup>th</sup>-century, weekly court proceedings were often reported in great detail, even when the offences dealt with were relatively minor. For example, on the 24<sup>th</sup> January 1863, the Leicester Mercury reported that on the 17<sup>th</sup> January, five cases were heard in Ashby Police Court. One was an assault on a pub landlord, two were assaults on police officers and in two cases, gamekeepers were charging men with trespassing on their employers' land. All were found guilty and the sentence was a fine or a short term of imprisonment. The lightest sentence was received by J. Curtis on being found guilty of assaulting P.C. Wilson. He was fined £1 or seven days imprisonment. The heaviest sentence was imposed on a group of four men who were charged with assaulting P.C. Fardell. Two of them were fined £5 or three months hard labour, the other two absconded.

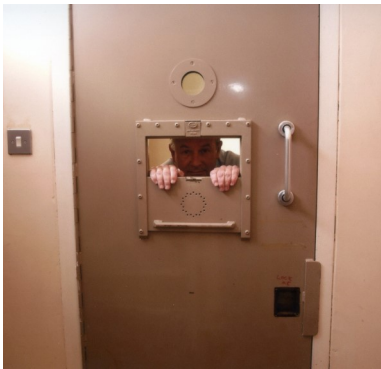


The court was held on a Saturday and there had been four magistrates sitting on that day. They were: W.W. Abney (local gentry), T Mowbray, (retired naval officer), H.E. Smith (occupation not known) and Rev. J. M. Echalaz.

The earliest case report for Ashby Police Court that I have been able to find in old newspapers is that of the sitting which took place on Wednesday 24<sup>th</sup> May 1862 before just one magistrate, W.W. Abney Esq. The main business concerned quite a lengthy case in which an engine fitter, Joseph Stockley,



and James Matthews, Slater, and Thomas Foxhall, all from Birmingham, appeared, having previously been remanded on a charge of “having burglariously entered the rectory house at Coleorton”, the home of Reverend Mereweather. A man servant to Mereweather was the first witness to be called and he described how he had found a dining room window open and the room in “a confused state” with drawers and several pieces of furniture wrenched open. A number of other witnesses appeared including Police Sergeant Clarke who had attended the scene the next day. This all took place long before the possibility of taking fingerprints of course, but the officer had been able to compare the defendants’ boots with footprints found in the flower bed under the window and found them to be a match. The police also found the blacksmith who had made the “cutter” used by the burglars, porters on Burton railway station who remembered seeing the men, and items in the house of Stockley that belonged to Rev.



Mereweather. How the police traced the men to their addresses in Birmingham is not explained.

Evidently this was not a “one off” expedition for the Birmingham men as two of them were further charged with attempting to burgle the home of Reverend Belcher at Heather on 13<sup>th</sup> May. Unfortunately for the robbers, the room was empty, having been cleared the day before in anticipation of the chimney sweep so, the men got away with nothing. They were committed for trial at the next Assizes in

Leicester. I have not found out what the final outcome was.

In the 20<sup>th</sup>-century, newspapers did not usually report court cases in much detail, if at all, unless they were exceptionally serious or outrageous. The latest references to Ashby Police court I have been able to find is that of a man from Oadby who in November 1943 was fined £25 for dangerous driving. Also in that year, a former miner from Moira, living in Northumberland, was charged with sending a threatening letter (which was produced in court) to a woman in Moira and demanding the return of a book of coupons. His rather bizarre threat was that if she did not return it, he would write to her husband or she would have to go to a caravan with him. He was bailed on a sum of £20 to appear at Leicester Assizes.

I do not know when the court at Ashby Police station ceased to function but we know that the police office building was sold in 2012 and turned into offices in 2014. Before the conversion, I was able to enter on behalf of Ashby Museum and photograph the interior as it was then. Some of those photographs accompany this article.

**Wendy Freer**

**BLUE**  
LITTLE BIRDIE  
DESIGN - COPY - PRINT



76b  
Market  
Street  
  
01530  
  
411510

 **THE CHURCH  
OF ENGLAND**

**0800 804 8044**

 **DailyHOPE**

A free phone line of hymns,  
reflections and prayers

# Blossom Caring

DO YOU NEED HELP AT  
HOME?

Caring	Cooking
Cleaning	Hospital visits
Collections	Doctors appointments
Dog walking	Trips out

*I offer a range of services and I  
am available as and when you need me*

**Contact April on 07857 562306 to  
discuss the assistance you need.**

*\* I work according to COVID-19 guidelines with a limited  
number of clients \*CRB-checked \*15+ years experience  
\*References available*



**Looking  
for the  
right  
advice?**



Property Law

Business Law

Wills & Probate

Family Law

Litigation

## Choose Crane and Walton for everything legal...

We provide quality services in a friendly yet professional way on a range of legal matters, including:

- Property Law and Conveyancing
- Family Law
- Inheritance Tax Planning
- Litigation
- Wills and Probate
- Lasting Powers of Attorney
- Court of Protection Applications
- Business Law
- Trusts



**CRANE AND WALTON LLP**

**SOLICITORS**

**Lexcel**  
The Quality Standard for  
Solicitors

**Ashby Office**  
30 South Street Ashby de la Zouch  
Leicestershire LE65 1BT  
Tel: 01530 414111  
Fax: 01530 417022

**Coatville Office**  
21-25 London Road Coatville  
Leicestershire LE67 3JB  
Tel: 01530 834466  
Fax: 01530 810886

**Leicester Office**  
113-117 London Road  
Leicester LE2 0RG  
Tel: 0116 2551901  
Fax: 0116 2555864

**Melbourne Office**  
William's Yard  
Derby Road, Melbourne  
Derbyshire DE73 8JR  
Tel: 01332 863810

[www.craneandwalton.com](http://www.craneandwalton.com)

# Mothers' UNION

## Christian care for families

St Helen's Mother's Union branch held our Pancake Lunch on the 21st February. We enjoyed the time together, enabling members and friends to socialise, and enjoy Cannelloni filled savoury pancakes & sweet pancakes for dessert. The donations given will enable us to purchase more Bibles to be given to each bride & groom who marry at St Helen's.

We shall soon be in the month of March. Our MU2 evening group will meet on Tuesday March 7<sup>th</sup> in the Heritage Centre at 7.30pm. Bring along your favourite poem and share with us.

Members will, on Saturday, 18<sup>th</sup> March at 10am in the Heritage Centre, be preparing posies for Mothering Sunday which is on the 19<sup>th</sup> March. As normal these posies will be given out in the service held in church.

Our monthly Branch Meeting will be on the 21<sup>st</sup> March - it will be a Lenten Reflection led by Rev. Lynda Foot & held in the Heritage Centre at 10.30am. This meeting during Lent will enable us to take time from our busy lives & listen to Rev Lynda. As is the problem for many groups since Covid, our membership has lost a few members & due to ill health & our cold weather, we have not been able to welcome all our members yet. Please, if you are able, we look forward to seeing you at the Lenten Reflection on 21<sup>st</sup> March.

### Prayer

Loving Lord, who has created us all in your image, open our eyes to see your face in those of our sisters and brothers.

Transform our hearts and minds that we may respect and value each other as beloved children of God. Amen

*Adrienne Sedgman*

Chris Lewis

Counsellor / Psychotherapist

## Chris's Therapeutic Counselling

[chriscounselling@mail.com](mailto:chriscounselling@mail.com)

07828 463368

[www.chrispersoncentred.co.uk](http://www.chrispersoncentred.co.uk)

30 Moira Road

Ashby de la Zouch LE65 2GA

Also in Nottingham & Loughborough

# Darklands

School of Motoring

**Jane Armson, ADI**

*Friendly, professional tuition*

*Intensive courses*

*Full hour lessons*

*Pass Plus*

*Motorway Tuition*

## Telephone

01332 865293  
(Staunton Harold)

07774 924913  
(Mobile)

# Sweet Feet



I offer a friendly professional service in the privacy and comfort of your own home. I am a fully qualified Foot Health Practitioner DipCFHP, MPSPract, and a member of the accredited register of foot health practitioners.

Treatments include:

- Routine foot care
- Nail trimming
- Corn removal and callous/hard skin reduction
- Fungal nails
- Reduction of thickened nails
- Verrucae
- Cracked heels
- Foot health advice and diabetic foot care
- Ingrown toenails

MOBILE FOOT CLINIC

Please call Wendy on 07938 750840 to arrange an appointment



## DC WOODWARD, MRCVS

Veterinary Surgeon

Mon-Fri 8 am–7 pm | Sat 9 am–12 noon | Sun 9.30–10.30 am

*All consultations by appointment*

**24 hr Emergency Service**

Ivanhoe Business Park Smisby Road  
**01530 412035**

## March Gardening Tips

**M**arch is the time for finishing off the clearing of borders (Perennials and Ornamental Grasses) and starting off vegetable plot preparation as well as sowing seeds. It is officially the start of Spring although it can be very cold and frosty at times so you need to keep an eye on the weather forecasts, especially for overnight.

Clocks go forward at the end of March so that the increase in daylight hours will help plants to start growing. Spring bulbs take centre stage both in the borders and in pots, a true reward for all the effort of planting them last



Autumn. Later in the month, start a regime of deadheading Spring flowering bulbs as the flowers finish.

Leave the foliage to die back naturally to feed the bulb for next year. Plant summer bulbs such as Dahlias, Lilies and also Snowdrops for next year.

Continue pruning Roses, Buddleias, Cornus and Hydrangeas. Now is the time to start planting Onion and Garlic Sets in the newly prepared vegetable plot. Wait until the end of the month to start growing Broad Beans.

Germinate Herbs indoors or in a greenhouse – even the most delicate ones such as Basil, Dill and Coriander can be planted. Start chitting potatoes as the first earlies can be planted from the middle to the end of the month. Finally, lift and divide perennials such as Hostas, Delphiniums and Lupins to ensure healthy and vigorous plants every year.

General soil improvement is essential at this time of year. Ideally, we should mulch the surfaces with at least one inch of organic matter such as garden compost. This will trap moisture in the soil as well as suppress weeds.

As well as plants coming to life, so do the slugs and snails. They love to chew on new Herbaceous plants such as Hostas. Use biological controls if possible but they need a minimum soil temperature of 5 degrees centigrade to work properly and then only deal with slugs and not snails. Both can be controlled with organic pellets based on Ferric Phosphate and not on the now-banned Metaldehyde.

Weeds will grow strongly this time of year so keep on top of them in your borders, vegetable plots and pots on your patios. Ensure you always get the roots and only use a hoe in very dry soil conditions as weeds can re-root if the soil is moist.



Keep providing birds with fresh water and food. Clean paths, paving, patios and steps with a pressure washer. Finally consider using vinegar, with at least 5% Acetic Acid, to kill off patio weeds and moss. It is an environmentally friendly alternative and works extremely well.

Now is the time to consider visiting garden shows as well as local open gardens. Tickets are all on sale now.

**Alan Cross**



For news and views in North West Leicestershire read your local newspaper

# Ashby Times

on sale every Thursday at your local newsagent

Telephone:

**01530 813101**

email:

**editor@ashbytimes.com**  
**advertising@ashbytimes.com**

## THE CHILDREN'S SOCIETY SHOP



THE CHILDREN'S SOCIETY

**94 Market Street**

Ashby de la Zouch

*Serving the community since 1987*  
*Quality nearly-new bargains for everyone*  
*Gifts of donated goods always needed*  
*Volunteer helpers welcome*  
Telephone **01530 417096**



### DV Accountancy Service

Small Business Specialist  
Self-Assessment - Payroll  
VAT - Business Planning  
Evening Appointments Available

**David Howitt**

127, Burton Road, Ashby de la Zouch, Leics. LE65 2LH  
01530 412273

## Marvellous March Music Making

### Galliarda - An Enlightened Heart - Saturday March 4<sup>th</sup>

The Galliarda quartet, originally were formed by the late Nottingham-based musicologist, recorder player and flautist Wendy Hancock. Since Wendy's death in 2016 the ensemble has reformed and is led from the harpsichord by original member, soprano, Sara Stowe. Other members are recorder player Kate Allsop, Ibi Azziz on viol, and Matthew Spring on lutes and viols.

They have performed throughout Britain including a nationwide tour on the

Making Music scheme (2013-15) and for BBC's 'In Tune'. Their visit to St Helen's is part of their Continuo Foundation tour, when they will be performing music from their recent project (and CD) An Enlightened Heart.

As featured on radio 3's In Tune programme on February 9<sup>th</sup>, the An Enlightened Heart project highlights the music and performing traditions of women in the 18th century, raising awareness of what educated, musical women of the time were composing, and the difficult position they had as independent composers, multi-instrumentalists and singers in the age of the enlightenment. (You can catch up via BBC Sounds.)

The concert at St Helen's will also include two pieces for early instruments specially commissioned from young female composers (Jenni Pinnock and Rebecca Rowe) which connect with the developing tradition of female composers today.

### **Mosaic - Good News - Friday March 10<sup>th</sup>**

**T**he Vocal Octet, Mosaic, was formed in 2007 and has performed widely throughout the East Midlands since then, raising thousands of pounds for charities and other good causes. Just before the pandemic struck, MOSAIC recorded a well-received CD of some of its favourite pieces.

The Group's repertoire is very varied and includes pieces from the 1500s through to the 21<sup>st</sup> century, from the sacred to the secular, from folksongs, spirituals and a cappella settings of jazz to arrangements of pop music classics by the Beatles, Billy Joel, Kate Rusby, Ben Folds and others.

The eight singers in this group perform, above all, for the joy of making beautiful music together in beautiful settings. They seek to create a perfect vocal blend, and to communicate the core messages of the pieces they sing in a convincing and effective way.

The programme for St Helen's will be varied, beautiful and entertaining. It will include one item sung by the Women's Voices who, under the name *Tesserae*, have performed a successful lunchtime concert at St Helen's; the men's voices, currently seeking a suitable name, will also contribute an item to the programme, all alongside the richly textured 8-part pieces which make up the bulk of MOSAIC's repertoire.



# Wanted by Restorer

Do you have ...

⇒ pre 1970s furniture, wood or woodworking tools?

- \* Teak, mahogany, oak, pine etc.
- \* Painted, broken or woodworm
- \* Even charity shop rejects

Contact Paul on 07895 451158 or [pwin2457@gmail.com](mailto:pwin2457@gmail.com)

## villair

### Independent Travel Consultants

*Specialist in*

- Personalised itineraries •
- Over 20,000 computerised low cost airfares •
  - We search and book low cost airlines •
  - Accommodation or tours only if required •
- Very competitive annual and family insurance •
- Well travelled staff have visited Europe, Mediterranean •
  - USA, Canada, Caribbean, Bermuda •
  - Dubai, South Africa, Australia, New Zealand •
  - Far East, Fiji, Hawaii, Mexico, Mauritius, etc. •

*Pop in and see us at*

1 Bath Street Corner, Ashby de la Zouch, LE65 2FH



# Quotes for the Month

'The C of E is right to prevaricate on gay marriage.'

*Theo Hobson, The Spectator, January 28<sup>th</sup>*

'The Church must decide now on same-sex marriage.'

*General Synod member Jayne Ozanne, The Church Times, January 31<sup>st</sup>*

'Welby would rather see C of E disestablished than split over same sex marriage - he may get both.'

*Andrew Graystone, Twitter, February 2<sup>nd</sup>*

'St Antony asks God what he did to deserve an eternity looking for everyone's lost car keys.'

*Kissing Fish Facebook page, February 7<sup>th</sup>*

'Now Even God is Going Gender Neutral.'

*Front page headline, Daily Mail, February 8<sup>th</sup>*

'The Church is not changing God's pronouns from He/Him to They/Their ... God prefers the first person subjective personal pronoun. Suitably inscrutable. God, I/me.'

*Revd Canon Giles Fraser, God Has No Gender, Unherd blog, February 9<sup>th</sup>*

'Jesus will be making an appearance during the Super Bowl thanks to He Gets Us ... ad campaign'

*Sojourners, Facebook, February 9<sup>th</sup>*

'The Church of England has voted in favour of a motion to offer blessings to same sex-couples in civil partnerships and marriages ... [and] to "lament and repent" the failure of the Church to welcome LGBTQI+ people ... in churches.'

*Sky News, February 9<sup>th</sup>*

'Today, in London, the Church of England entered into what is essentially a de facto relationship with the Devil ... rather than marriage to the lamb.'

*Baptist pastor Murray Cambell, Anglican.ink, February 9<sup>th</sup>*

'The Church of England is to be ostracised by the body that claims to represent the majority of Anglicans after it backed blessings for gay couples.'

*The Telegraph, February 10<sup>th</sup>*

'For too long we have been whispering about inclusive love in the dark, now we must proclaim it in the light from the housetops'

*Very Revd Andrew Nunn, Dean of Southwark, A Better Story, anunnatsynod blog, Feb 11<sup>th</sup>*

'Jesus was right next to me.'

*Asbury revival sets Catholics on fire with Holy Spirit, detroitcatholic.com, February 17<sup>th</sup>*

'I love to think of life after death; exploring that unknown will be my next great adventure.'

*Primatologist Jane Goodall interviewed for The Observer, February 18<sup>th</sup>*

'The reason Christians give things up is so that we can return to them with increased joy, and a renewed appreciation that everything we receive in this life, each mouthful of food and each lung-full of air, is gift ...

*Archbishop Stephen, Pause for Thought, BBC Radio 2, Shrove Tuesday*

'It is exactly when we place ourselves into God's hands we realise that his infinite mercy ... is freedom.'

*C of E Lent Reflections, DustAndGlory app, February 23<sup>rd</sup>*

'The altar party procession is keeping to a strict 4-3-2-1, with the tea light bearers just behind the lead druid, and Young Keith in the holding position.'

*Liturgy in Memory of John "Motty" Motson, The Beaker Folk of Husborne Crawley, Feb 23<sup>rd</sup>*

"When God calls you to some holy task, you might expect a contemplative path, a quiet life of service, and love of neighbour ... But true prophets know better."

*Sojourners Magazine Facebook page, February 28<sup>th</sup>*

# ***Green Grass***

Landscaping and garden maintenance

## **ALL YEAR-ROUND SERVICE**

### **30+ YEARS EXPERIENCE**

Hard & Soft Landscaping  
Grass Cutting: mower & ride-on  
Strimming & Lawn Edging  
Overgrown Site Clearance  
Waste Removal & Disposal  
Excavation & Rotovation  
Patios, Paving & Drives  
Turfing & Seeding  
Hedge & Shrub Cutting  
Pruning  
Planting & Plant Removal  
Ponds & Water Features  
Leaf & Snow Clearance  
Stump Grinding  
Weeding  
Fence Painting  
Pressure Washing

Plus more, and we are pleased to discuss your requirements

**FOR A FREE NO-OBLIGATION QUOTATION, PLEASE CALL  
CRAIG & SHARON**



Mobile: 07970627509

Office: 01530 830032

Let US build your dream garden or maintain it

St Helen's Church is part of the **Ashby Churches**

Alliance Church	07753 679147
Ashby Baptist Church	01530 413721
Ashby Congregational	01530 563301
Ashby Methodist Church	01530 412298
Holy Trinity	01530 412339
Our Lady of Lourdes	01530 412237



Donations can be left in the boxes at the back of St Helen's Church, in the porch of Holy Trinity or the Congregational Church, or at any of Ashby's Co-ops

Thank you to everyone for the continued support



*petdeli*

Free Local Delivery

*Your local pet food specialist*

5a Brook Street, Ashby de la Zouch  
Leicestershire, LE65 1HA  
Telephone : 01530 417484

See our latest offers on our website, Facebook & Twitter pages!



[www.petdeliashby.com](http://www.petdeliashby.com)

**A.E. Grice**  
**Funeral Service**

**Offering a sympathetic  
24 hour service in your  
time of need.**

**4 Derby Road,  
Ashby de la Zouch**

**01530  
412229**



## St Helen's Church & Community Heritage Centre



### Spring Concert series - **Galliarda - An Enlightened Heart** Saturday 4<sup>th</sup> March at 7.30pm

Highlighting the music & performing traditions of women in the 18<sup>th</sup> century. Plus two new, early instrument commissions from female composers.



### Spring Concert series - **Mosaic - Good News** Friday 10<sup>th</sup> March at 7.30pm

An exciting programme of a cappella vocal music from Thomas Tallis to the Beatles

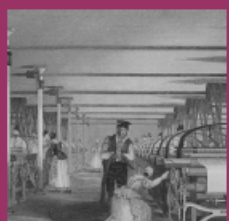


Sponsored by  
Leicestershire  
County Council

### Launch of eco project **Sew It Don't Throw It Open Day**

Saturday 11<sup>th</sup> March 10.30am to 3.30pm

Drop in for demos, meet the makers, 'have a go' repair & make, clothes swop rail, and textile chat



### Heritage Lecture Series - **Religious Non-conformity & the Early Leics Labour Movement**

Tuesday 28<sup>th</sup> March at 7.30pm

Looking at the influence the non-conformist church had locally on the Worker Co-operative Movement

4 Church Yard, Ashby-de-la-Zouch, Leics, LE65 1AA



Facebook.com/sthelensheritage



instagram.com/sthelensheritage



www.sthelensashby.net



Heritage  
Lottery Fund